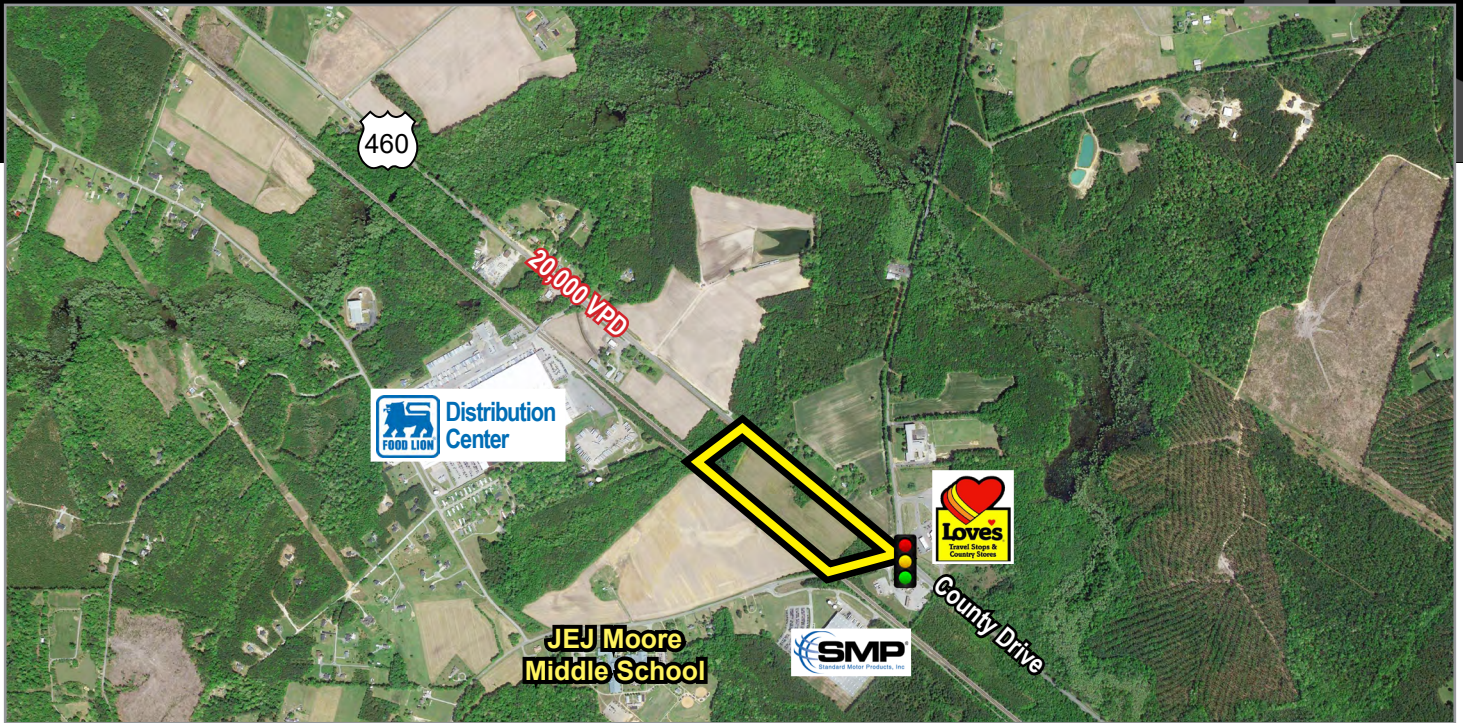


COUNTY DRIVE LAND

Disputanta, Virginia

FOR SALE



CORNER PARCEL AT SIGNALIZED INTERSECTION

PROPERTY HIGHLIGHTS:

- ▶ 21+/- Acres Available
- ▶ Nearby companies include Food Lion Distribution Center, Love's Trucking Terminal and Standard Motor Products.
- ▶ Great location on County Drive (Hwy 460) Less than 5 miles from I-95 and I-295, 10 minutes from Fort Lee.
- ▶ Corner at light zoned B-1, remainder zoned M-2
- ▶ Utilities available (water & sewer across at Love's), natural gas (100 yards off property), power, fiber, etc.
- ▶ Sale Price: \$650,000

Demographics	3 Miles	5 Miles	10 Miles
Population	2,064	11,972	98,873
Average Household Income	\$80,901	\$79,104	\$62,625
Daytime Employment	2,262	6,029	43,717



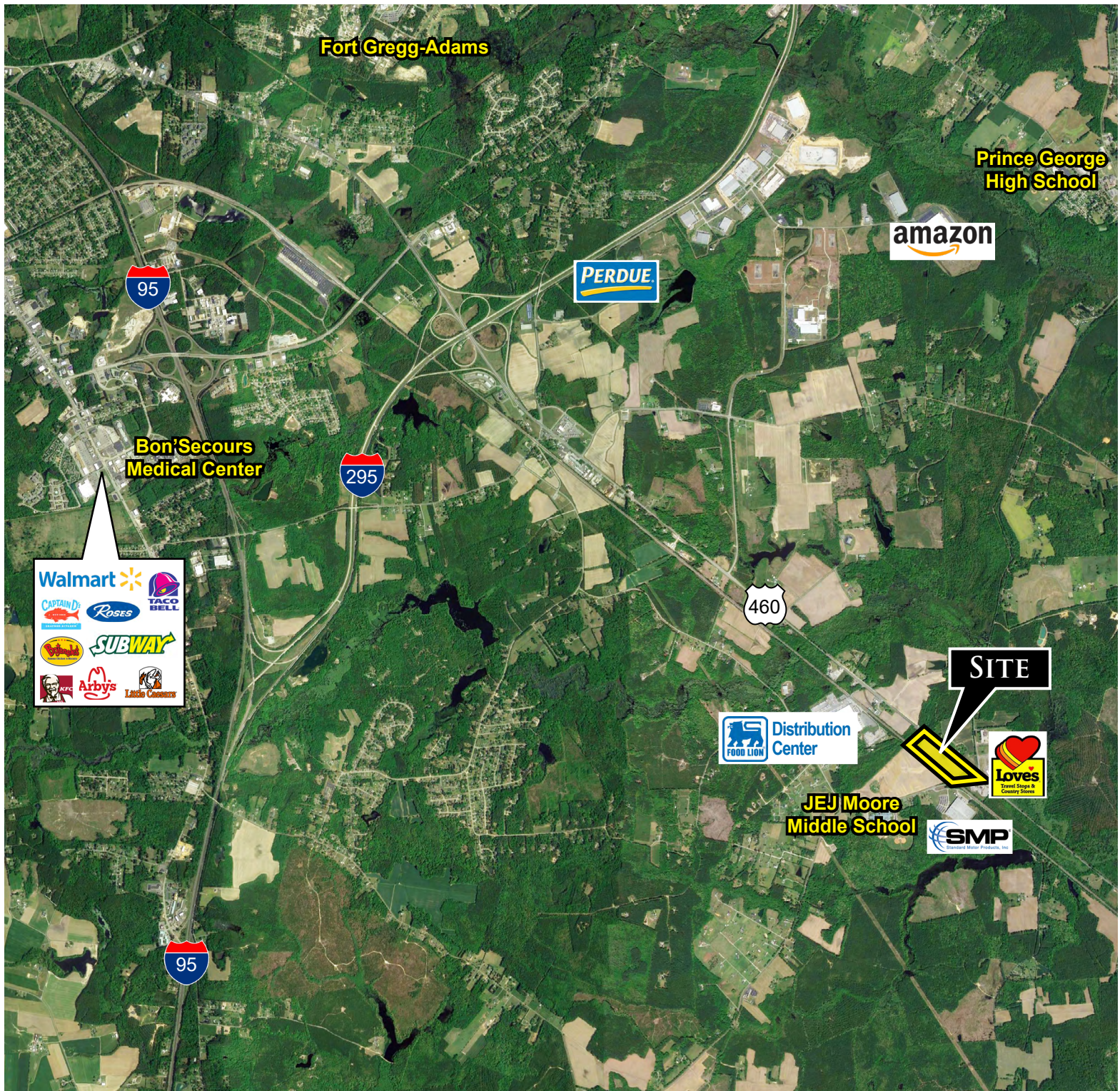
Nathan S. Jones, IV
nathan@domcre.com
855.530.2300

domcre.com

COUNTY DRIVE LAND

Disputanta, Virginia 23237

FOR SALE



Nathan S. Jones, IV
nathan@domcre.com
855.530.2300

domcre.com