

6805 COMMONS DRIVE

Prince George, Virginia 23875

FOR LEASE

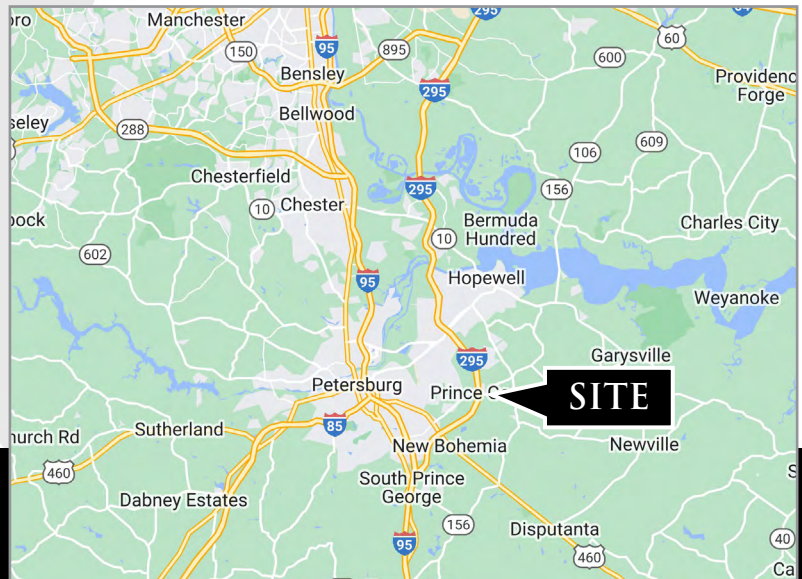


RETAIL/OFFICE SPACE AVAILABLE IN PRINCE GEORGE COUNTY

PROPERTY HIGHLIGHTS:

- ▶ 11,800 SF Dollar General anchored retail center
- ▶ Built in 2010, 1.10 acre, zoned B-1
- ▶ Located along Courthouse Road (Route 106) - 11,000 VPD
- ▶ Adjacent to County Courthouse Complex and Fort Gregg-Adams
- ▶ 930 SF space available (15' x 62') - 2 spaces available (not adjoining)
- ▶ Lease Price: \$1700/mth + separately metered electrical

Demographics	1 Mile	3 Miles	5 Miles
Population	1,113	14,998	47,459
Households	527	5,439	16,571
Avg Household Income	\$117,172	\$109,186	\$90,863



Nathan S. Jones, IV
nathan@domcre.com
855.530.2300

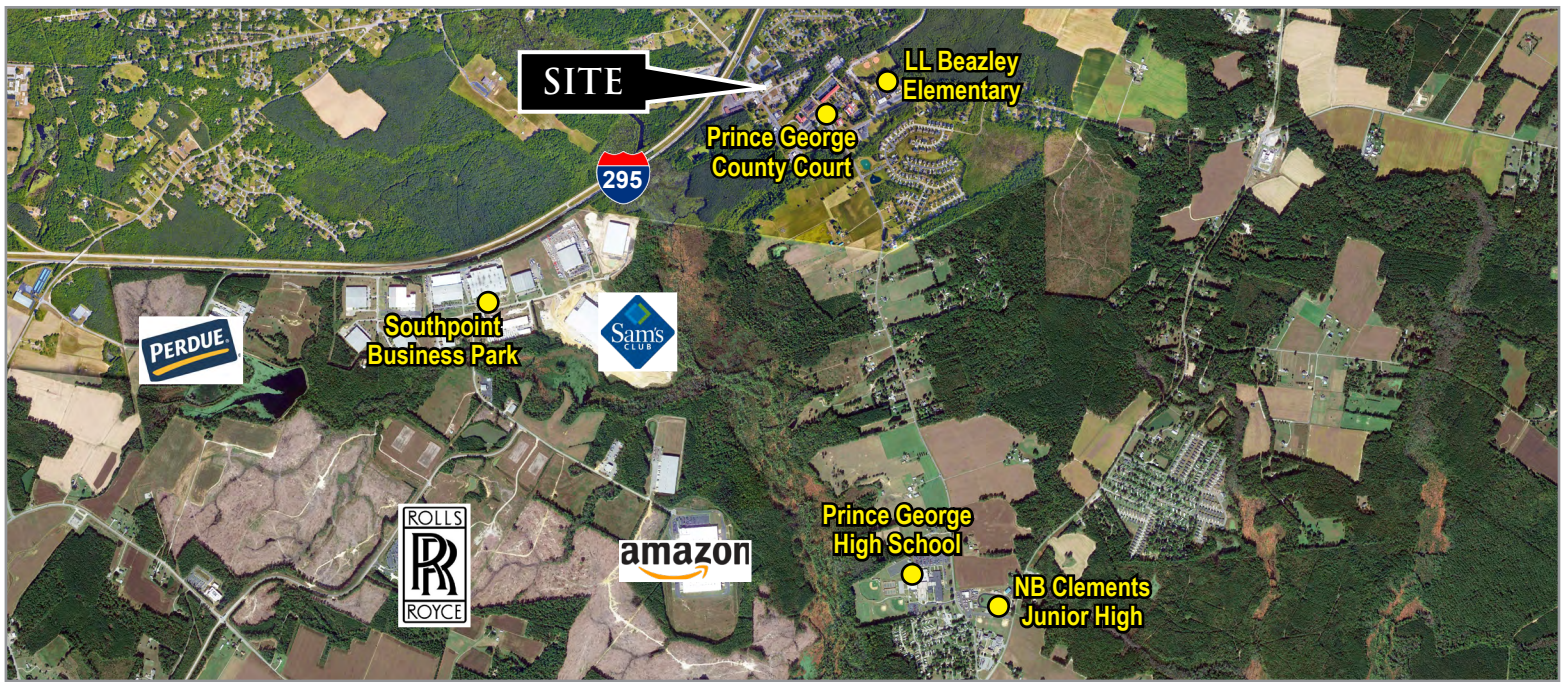
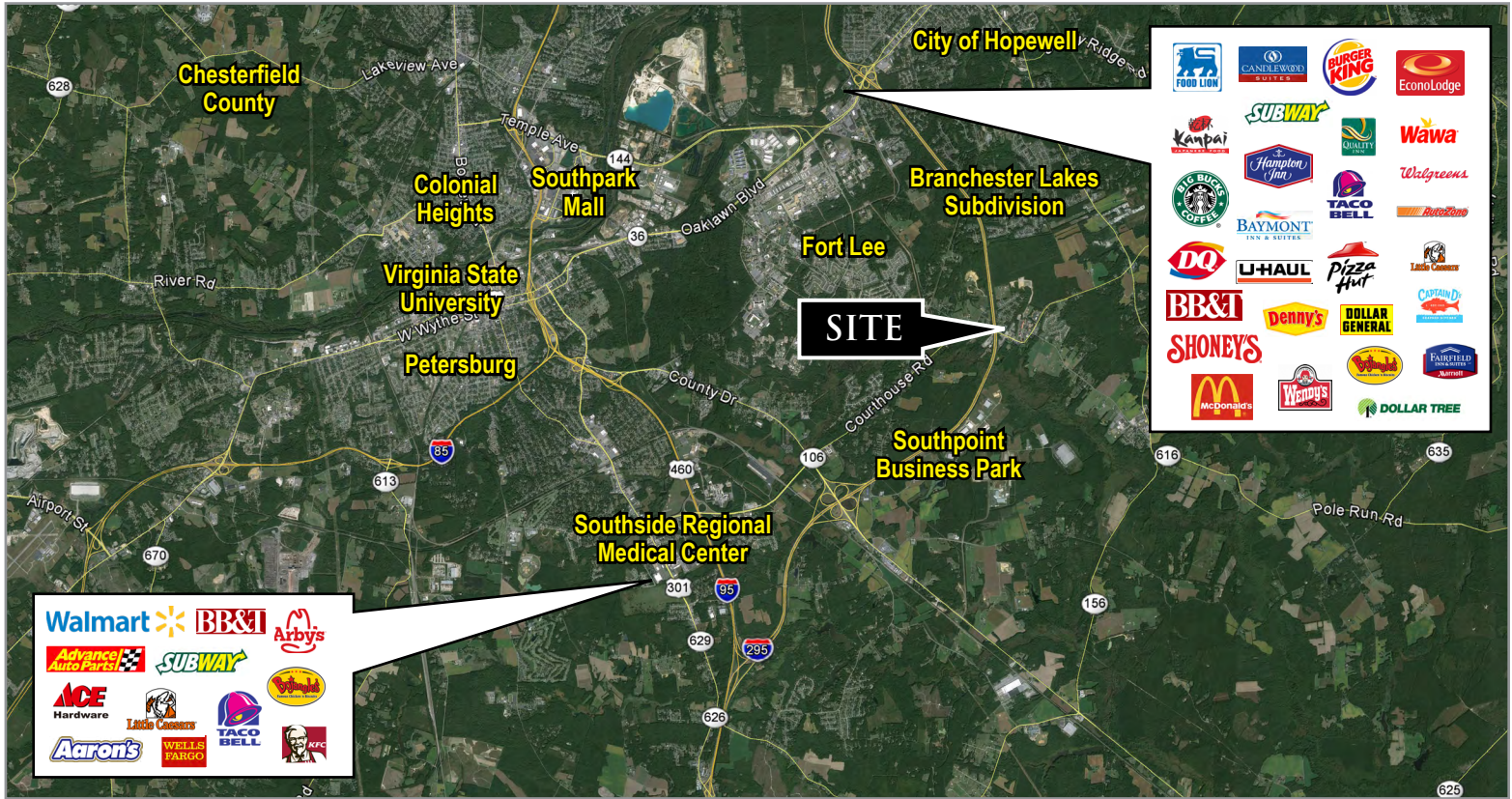
Kevin Winfree
kevin@domcre.com
855.530.2300

domcre.com

6805 COMMONS DRIVE

Prince George, Virginia 23875

FOR LEASE



Nathan S. Jones, IV
 nathan@domcre.com
 855.530.2300

Kevin Winfree
 kevin@domcre.com
 855.530.2300

domcre.com