

828 MAIN STREET (20TH FLOOR)

Lynchburg, Virginia 24504

FOR LEASE



UNIQUE DOWNTOWN RESTAURANT OPPORTUNITY!

PROPERTY HIGHLIGHTS:

- ▶ Outstanding Turnkey Restaurant Business Opportunity
- ▶ 5,899 SF Restaurant space available on the top floor of The James View Building, one of Lynchburg Virginia's premier downtown office buildings.
- ▶ Space offers large seating capacity, separate service area, a large open floor plan, and a fully equipped kitchen with adjacent bar.
- ▶ This top floor space offers breathtaking panoramic views of Downtown Lynchburg from Lynchburg's tallest building.
- ▶ Onsite Parking in Adjacent Covered Parking Garage, Can Double as Event Space
- ▶ Interior Office and Storage Space and spacious lobby.
- ▶ Lease Rate: \$20/SF Modified Gross



Chip Duff, MiCP
Senior Vice President
chipduff@domcommercial.com
434.238.6460

domcre.com

828 MAIN STREET (20TH FLOOR)

Lynchburg, Virginia 24504

FOR LEASE



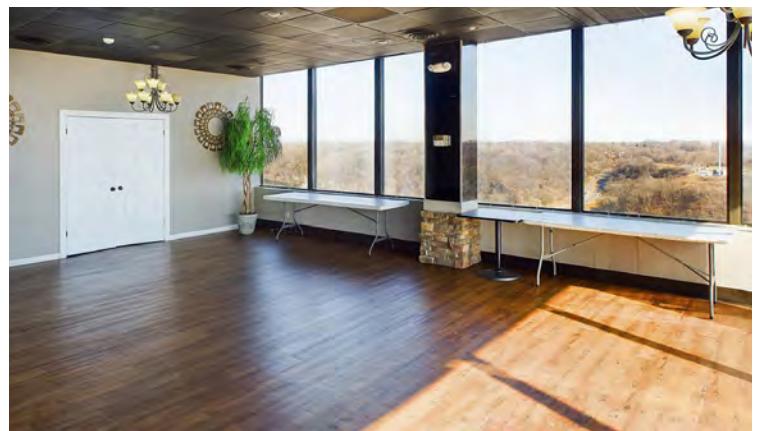
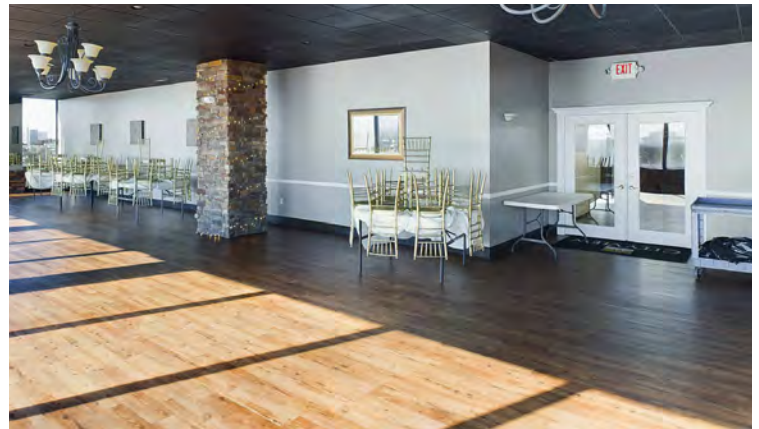
Chip Duff, MiCP
Senior Vice President
chipduff@domcommercial.com
434.238.6460

domcre.com

828 MAIN STREET (20TH FLOOR)

Lynchburg, Virginia 24504

FOR LEASE



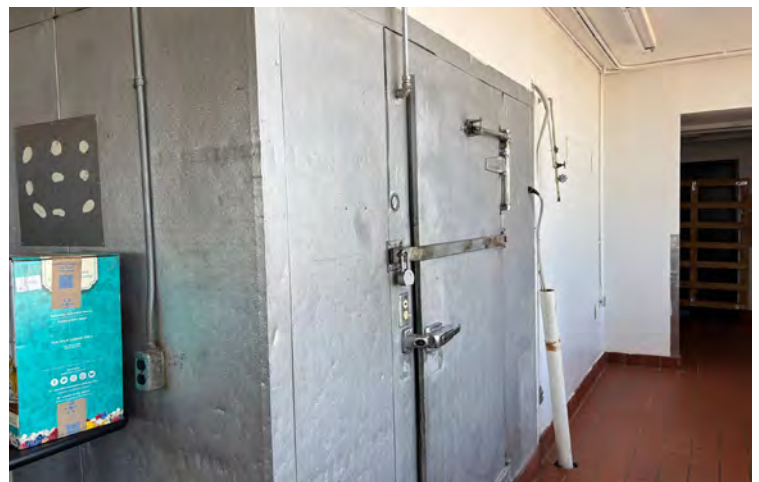
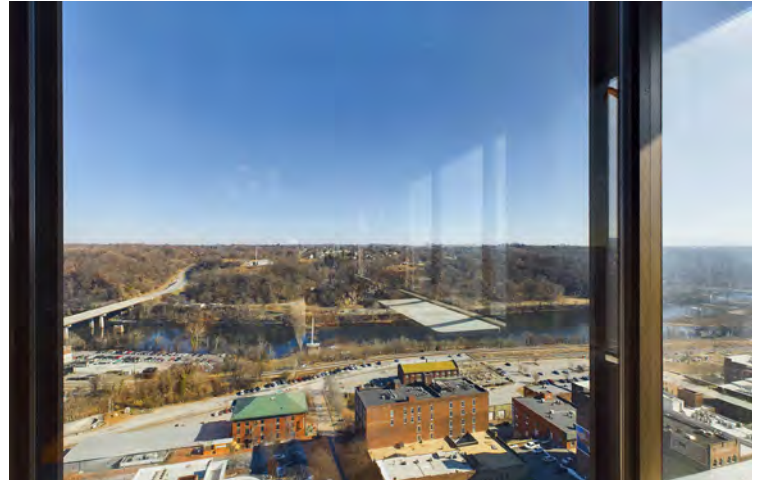
Chip Duff, MiCP
Senior Vice President
chipduff@domcommercial.com
434.238.6460

domcre.com

828 MAIN STREET (20TH FLOOR)

Lynchburg, Virginia 24504

FOR LEASE



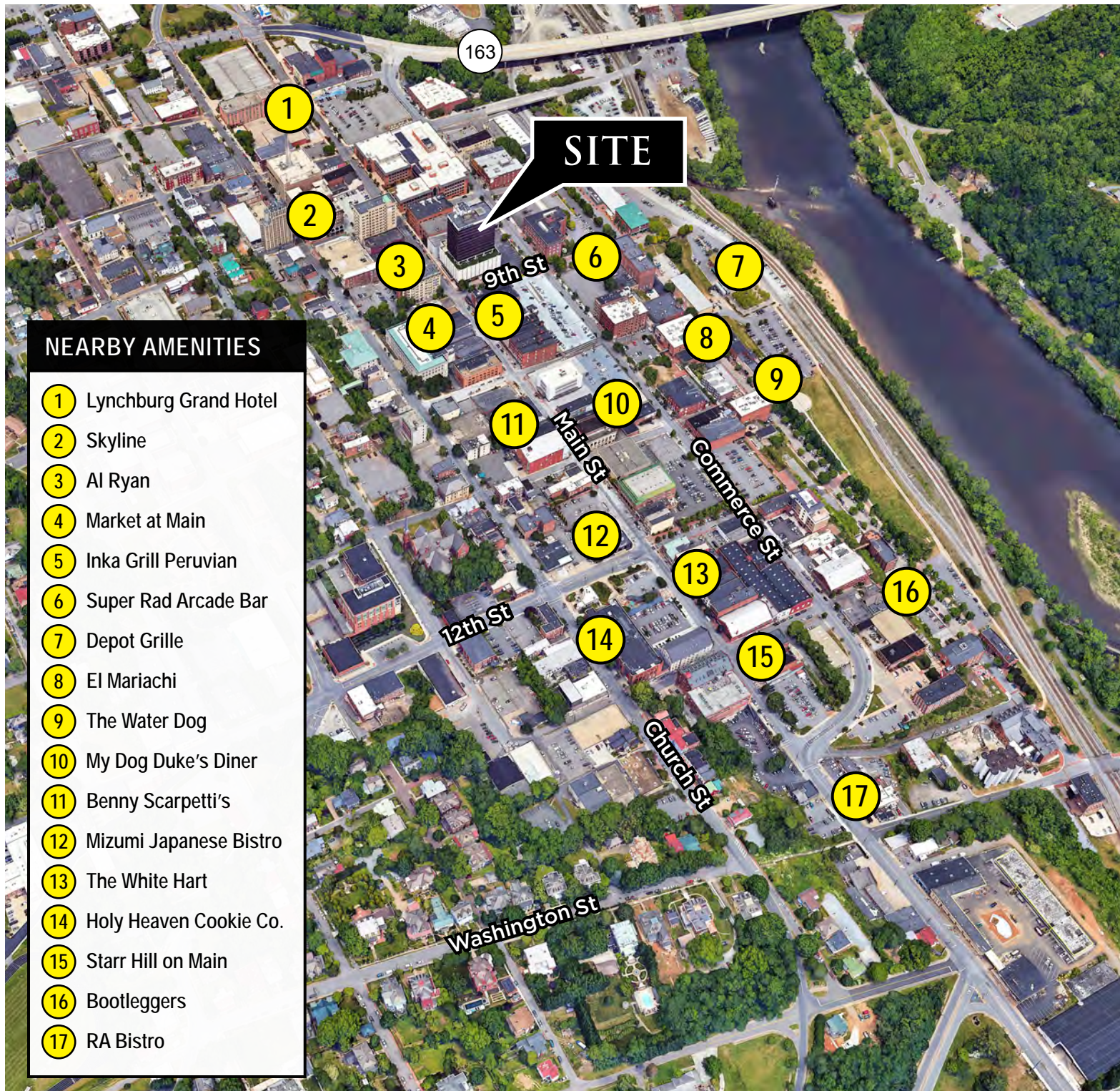
Chip Duff, MiCP
Senior Vice President
chipduff@domcommercial.com
434.238.6460

domcre.com

828 MAIN STREET (20TH FLOOR)

FOR LEASE

Lynchburg, Virginia 24504



Chip Duff, MiCP
Senior Vice President
chipduff@domcommercial.com
434.238.6460

domcre.com